



Project funded by the European Union EU-South Africa Dialogue Facility EuropeAid/132200/L/ACT/ZA. Coordinated by the African Centre for Migration & Society, University of the Witwatersrand

Migrating for Work Research Consortium

General programme presentation



Comparative Regional Integration Studies





The African Centre for Migration & Society at Wits



An internationally engaged; Africa-oriented; and African-based research and teaching centre dedicated to shaping academic and policy debates on migration, development and social transformation

- Graduate degree programme with students from across Africa, North America, and Europe;
- Research in 12 African countries on issues related to migration, human rights, development, governance, and social change;
- Partnerships on 4 continents;
- Regional reference point for public and scholarly debate and policy formation.





1. Programme background and rationale

2. Partnership and organisational structure

3. Programme components

4. Timeframe and expected outputs



1. Programme background and rationale



To upgrade the quality of the EU-SA migration dialogue (Magôbagôba dialogue) and other pillars of the Strategic Partnership

To build awareness and capacity among SA Government departments and civil society



1. Programme outcomes

1. Overview of existing migration, labour & economic growth policy frameworks in the Southern African context



2. Update existing quantitative and qualitative data on foreigners' position in the South African labour market and build a sustainable survey instrument



3. Ensure relevant dissemination and outreach of project findings from the start through a close association with boundary partners and key target groups

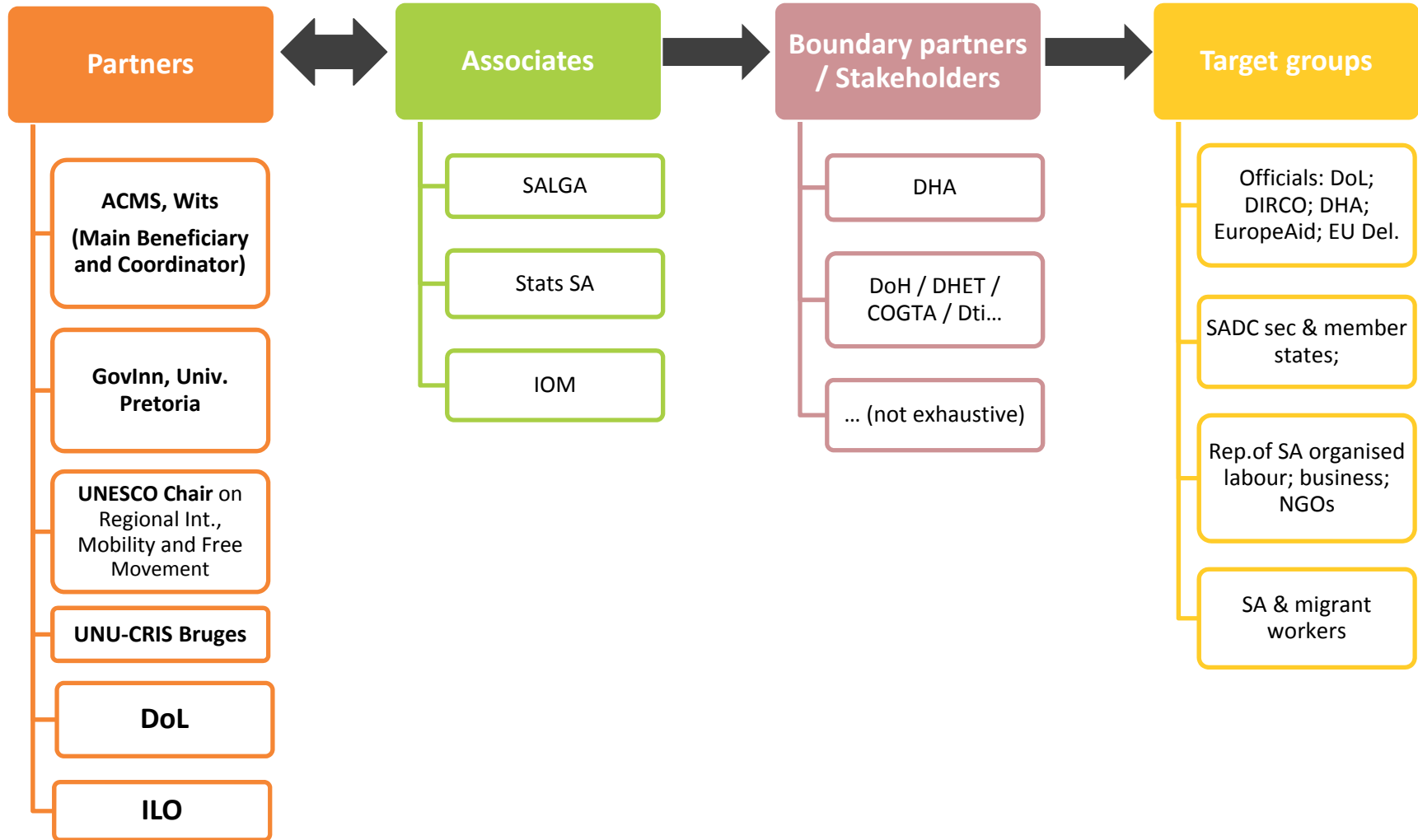


4. Use the project as a catalyst for capacity-building among these key target groups

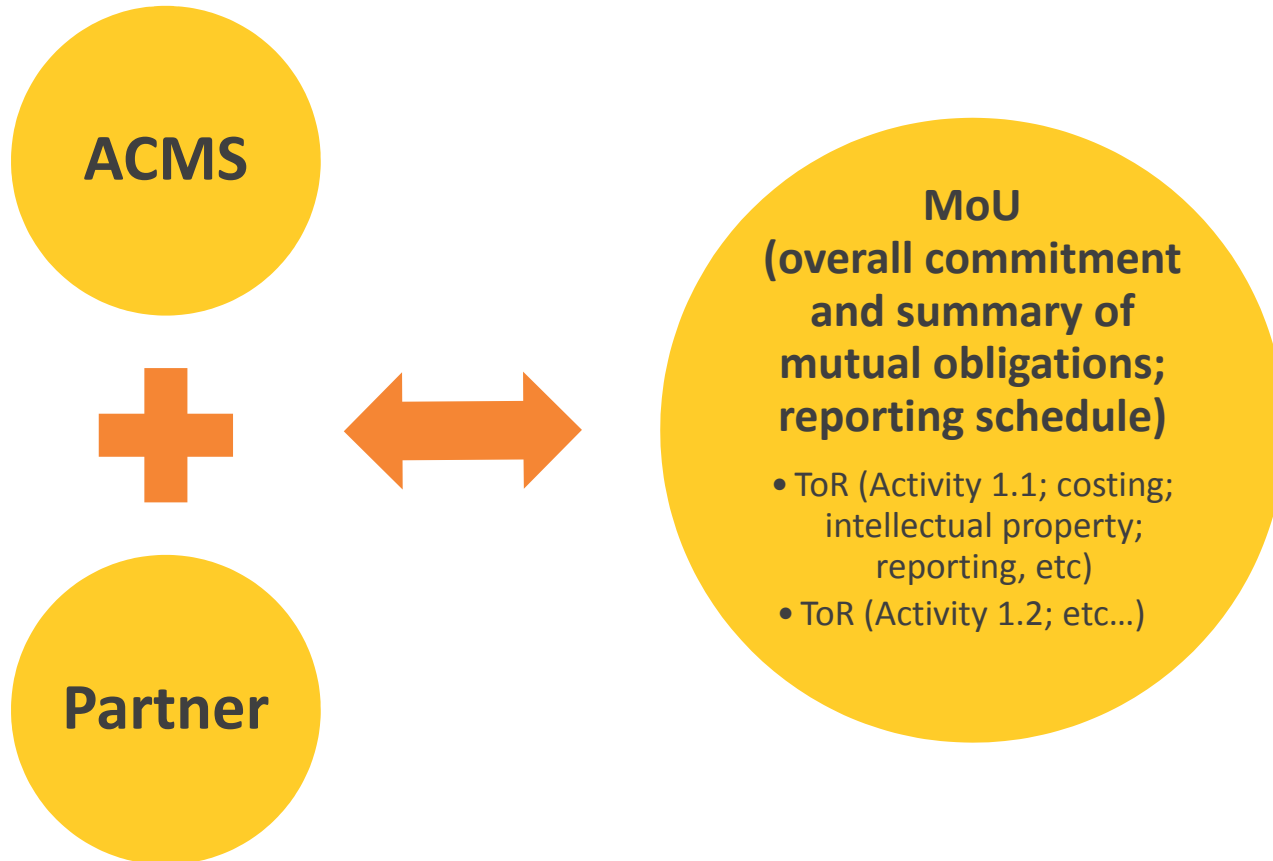


5. Support evidence-based regional and national policy reform in the area of labour migration

2. Partnership and organisational structure



2. Partnership and organisational structure



3. Programme components



3 activity clusters

Activity 1: Research programme

- Regional labour and migration policy reviews
- Development of survey instrument
- Low and high-skilled migrant labour (qualitative studies)
- Social rights portability (qualitative study)

Activity 2: Dissemination and outreach

- Availability of data in public domain
- Contacts, interventions and interactions with policy-makers
- Framing and dissemination of outputs

Activity 3: Capacity-building and policy- influencing

- Close partnership with Gov dpts
- Foresight labour migration policy development exercise
- Direct inputs in national, regional, and bilateral policy processes

3. Programme components



Activity 1: Research Programme 4 work packages

WP1. Policy - Regional labour and migration policy reviews (selection SADC & SA)

- Immigration policy
- Labour market policy
- Economic growth

WP2. Data - Development of survey instrument

- Critical review of existing data sets & best practices
- Development of pilot survey instrument foreign workers / SA labour market

WP3. Sectors - Low and high-skilled migrant labour in SA (qualitative studies)

- **Low-skilled migrant labour:** institutional framework; existing statistical data; 3 sectoral case studies (construction/hospitality; mining; agriculture)
- **Highly-skilled migrant labour:** institutional framework, existing statistical data, 2 sectoral case studies; 2 workplace studies

WP4. Social rights portability

- Interviews with migrants, employers & service providers in SA
- Economic feasibility studies

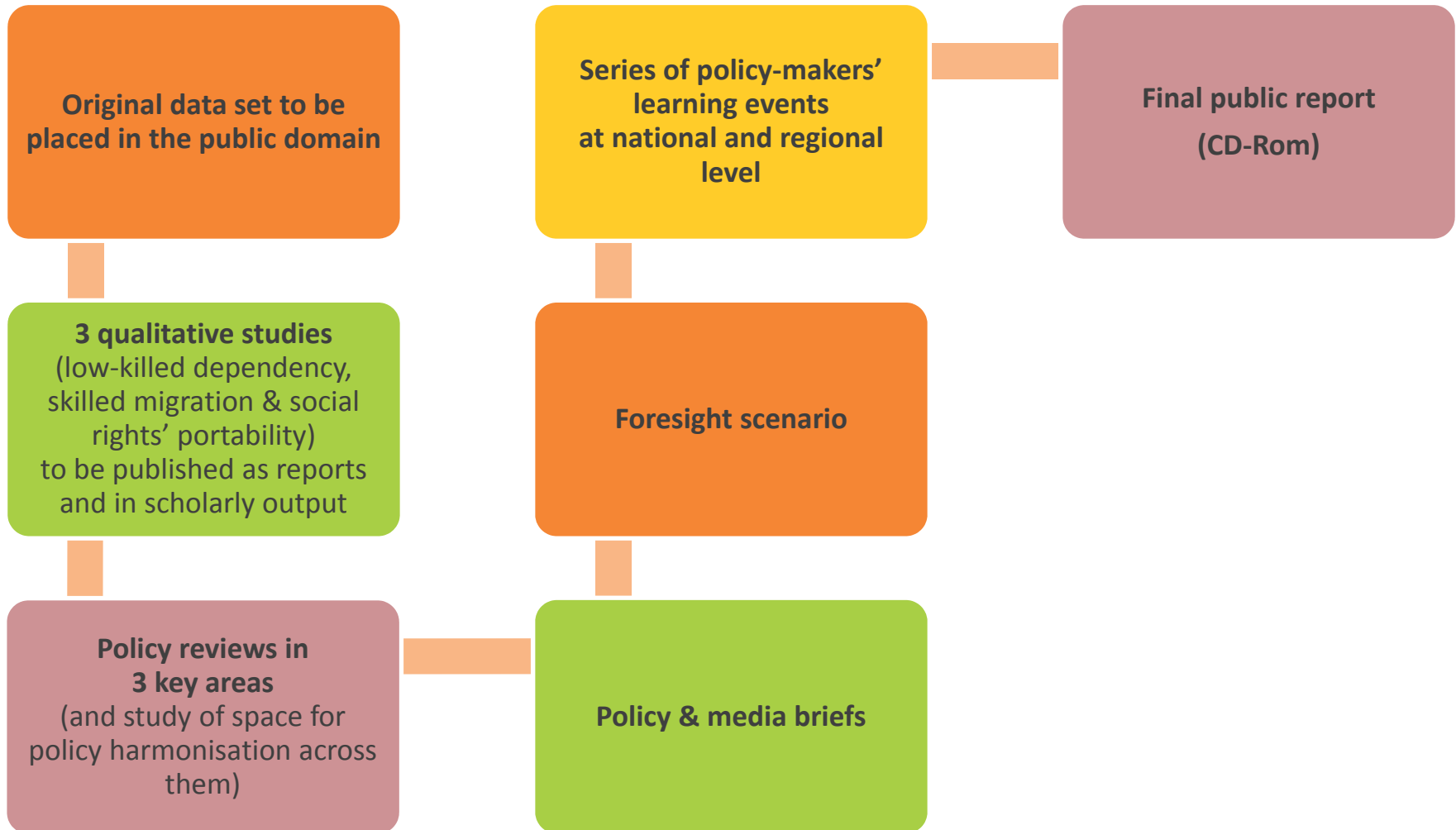
4. Timeframe and expected outputs



March 2012 – August 2014

	1st semester	2 nd semester	3rd semester	4th semester	5th semester	6th semester
Consolidation of partnership						
WP1 Policy						
WP2 Data						
WP3 Sectors						
WP4 Social Rights						
Dissemination & Cap.-bldg						

4. Timeframe and expected outputs



4. Timeframe and expected outputs



3 reports

- **Interim reports (Jan. 2013, Jan. 2014)**
- **Final report (July 2014)**



Project funded by the European Union EU-South Africa Dialogue Facility EuropeAid/132200/L/ACT/ZA. Coordinated by the African Centre for Migration & Society, University of the Witwatersrand

Migrating for Work Research Consortium

General programme presentation



UNITED NATIONS
UNIVERSITY
UNU - CRIS

Comparative Regional Integration Studies



International
Labour
Organization