



Project funded by the European Union EU-South Africa Dialogue Facility EuropeAid/132200/L/ACT/ZA. Coordinated by the African Centre for Migration & Society, University of the Witwatersrand

Migrating for Work Research Consortium

ILO – SADC – IOM Conference
Labour Migration in SADC: Trends, Challenges, Policies and Programmes
21 - 23 August 2013
Birchwood Hotel, Johannesburg





The African Centre for Migration & Society at Wits



An internationally engaged; Africa-oriented; and African-based research and teaching centre dedicated to shaping academic and policy debates on migration, development and social transformation

www.migration.org.za

- Graduate degree programme with students from across Africa, North America, and Europe;
- Research in 12 African countries on issues related to migration, human rights, development, governance, and social change;
- Partnerships on 4 continents;
- Regional reference point for public and scholarly debate and policy formation.





1. Programme background and rationale

2. Partnership and organisational structure

3. Programme components

4. Researching labour migration in national African contexts



1. Programme background and rationale



To upgrade the quality of the EU-SA migration dialogue (Magôbagôba dialogue) and other pillars of the Strategic Partnership

To build awareness and capacity among SA Government departments and civil society

1. Programme outcomes



1. Overview of existing migration, labour & economic growth policy frameworks in the Southern African context



2. Update existing quantitative and qualitative data on foreigners' position in the South African labour market and improve existing data collection mechanisms



3. Ensure **relevant dissemination and outreach** of project findings from the start through a close association with **boundary partners and key target groups**

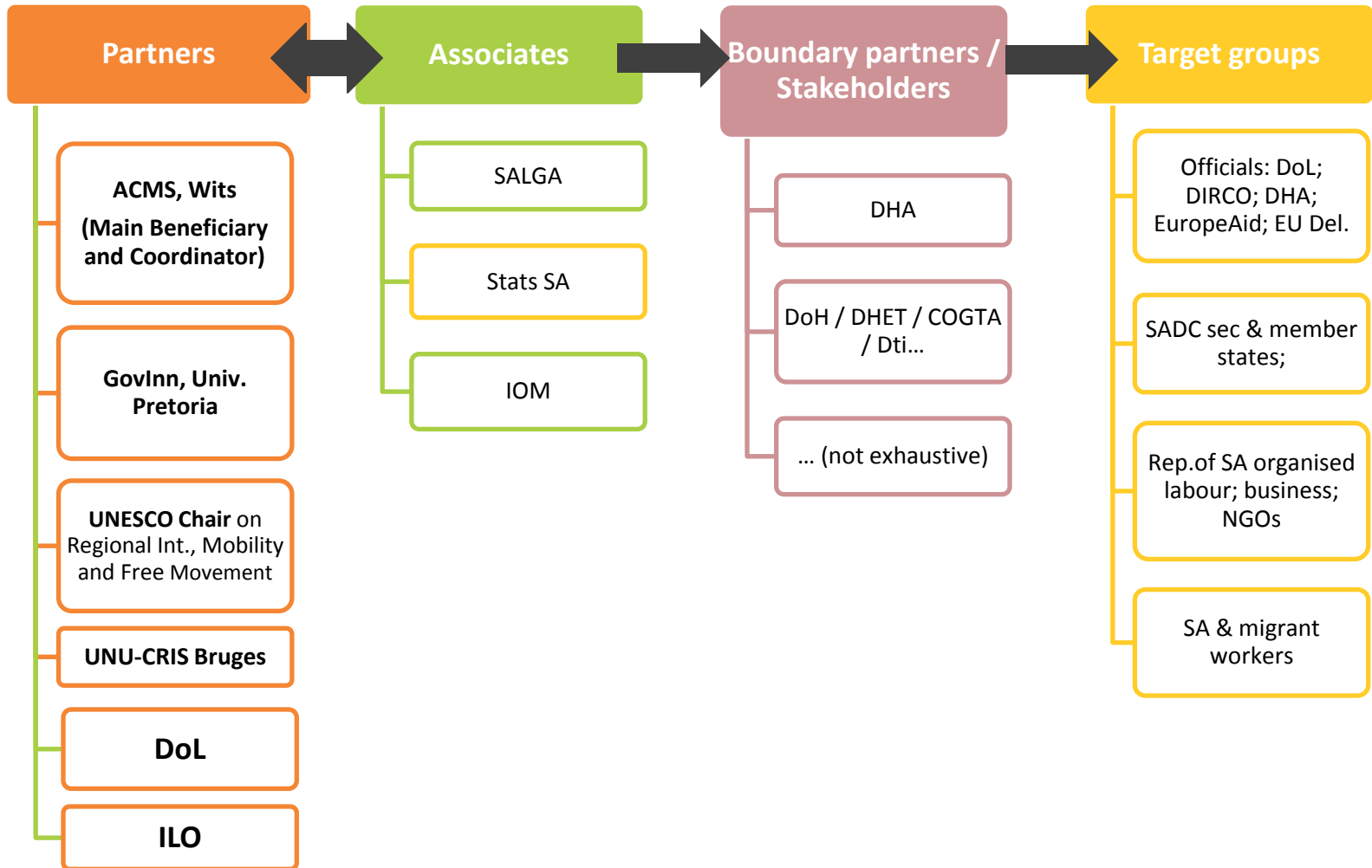


4. Use the project as a catalyst for **capacity-building among these key target groups**



5. Support **evidence-based regional and national policy reform** in the area of labour migration

2. Partnership and organisational structure



3. Programme components



Research Programme: 4 work packages

WP1. Policy - Regional labour and migration policy reviews (selection SADC & SA)

- Immigration policy
- Labour market policy
- Economic growth

WP2. Data – Improving the quality of existing data on foreign labour

- Critical review of existing data sets & best practices
- Improvement of migration module in national Labour Force Survey
- Municipal-level labour market surveys

WP3. Sectors - Low and high-skilled migrant labour in SA (qualitative studies)

- Construction /mining
- Agriculture
- Hospitality
- Domestic work
- Public health (highly-skilled)

WP4. Social rights portability

- Overview of existing policy frameworks between South Africa and its neighbours
- Case study of domestic workers' access to social rights

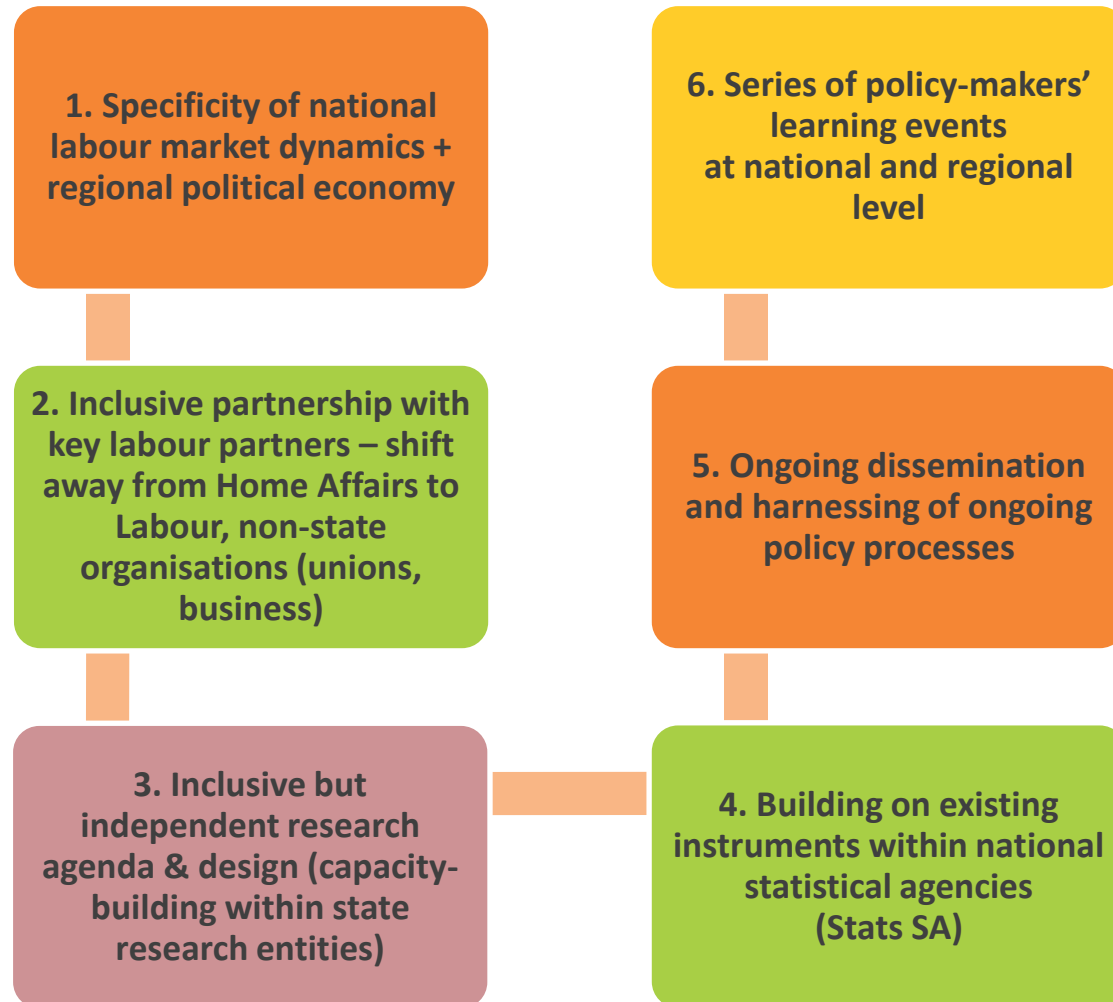
3. Programme duration



March 2012 – August 2014

	1st semester	2 nd semester	3rd semester	4th semester	5th semester	6th semester
Consolidation of partnership						
WP1 Policy						
WP2 Data						
WP3 Sectors						
WP4 Social Rights						
Dissemination & Cap.-bldg						

4. Researching labour migration in national African contexts





Project funded by the European Union EU-South Africa Dialogue Facility EuropeAid/132200/L/ACT/ZA. Coordinated by the African Centre for Migration & Society, University of the Witwatersrand

Migrating for Work Research Consortium

www.miworc.org.za

ILO – SADC – IOM Conference
Labour Migration in SADC: Trends, Challenges, Policies and Programmes
21 - 23 August 2013
Birchwood Hotel, Johannesburg



UNITED NATIONS
UNIVERSITY
UNU - CRIS



Comparative Regional Integration Studies